



PARTNER  
IN DESIGN  
Innovative  
Design Solutions

doxa

---

# ORA

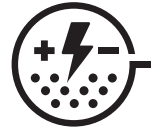
---



doxa

PARTNER  
IN DESIGN  
Innovative  
Design Solutions

# ORA



Electrostatic  
Paint



Upholstery

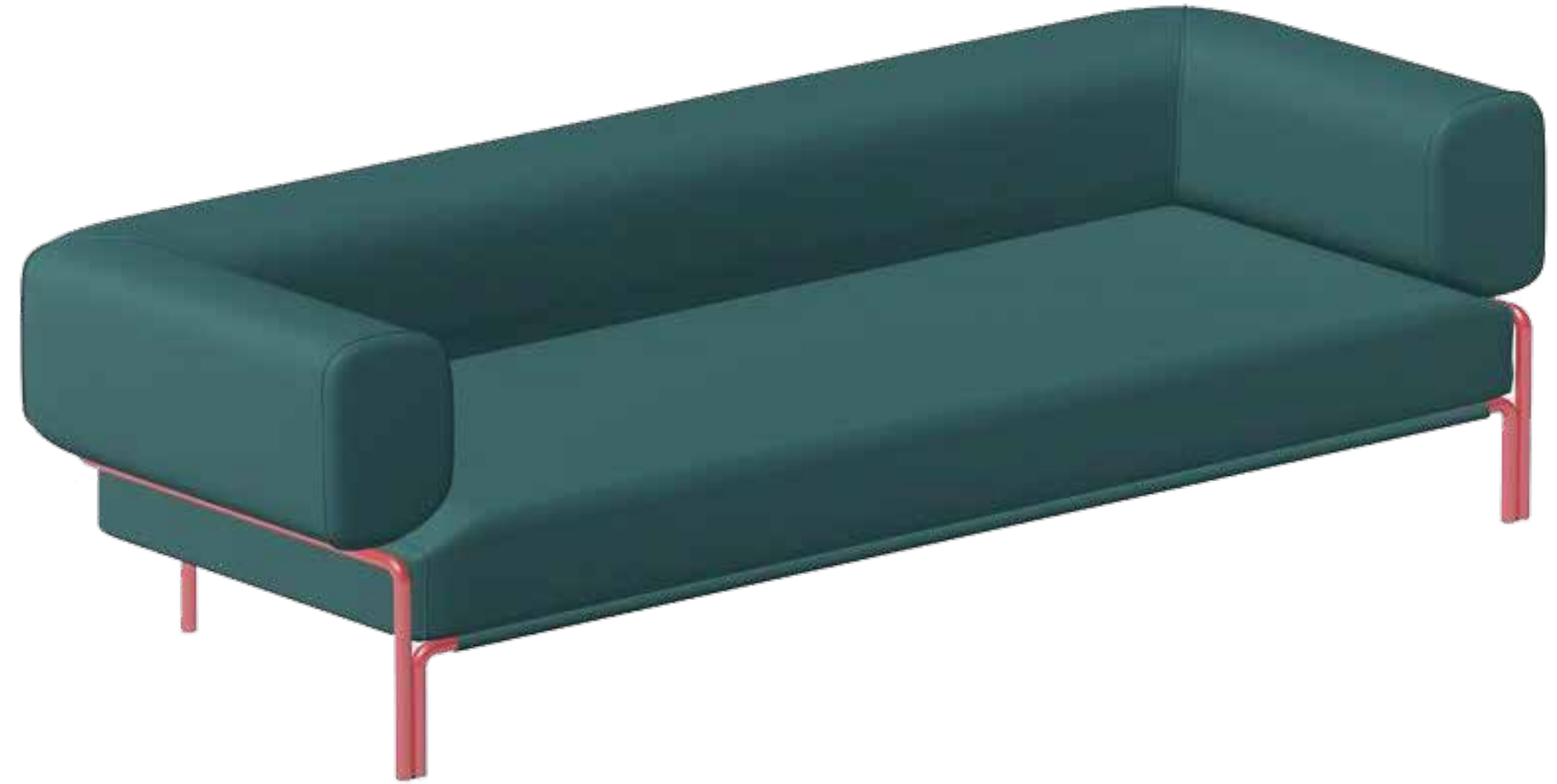


Chrome



Leather

SOFAS



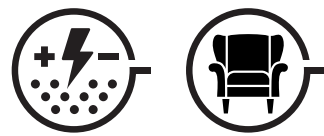
Ora is a modular sofa system that provides efficient use of spaces, provides an organic and comfortable character. It is built on corner structure, arm joint, metal frame-shaped foot structure, industrial metal pipe twisting. Its different modular elements create unlimited configurations for any general or special environment. Leather and fabric options offer timeless style and choice while shaping the space with different colors of the leg.

*Ozan Sinan Tiğlioğlu*

doxa

**PARTNER  
IN DESIGN**  
Innovative  
Design Solutions

# ORA



## SETS



Ora Single Sofa  
86x102x74 cm



Ora Double Sofa  
86x180x74 cm



Ora Triple Sofa  
86x228x74 cm

LEATHER COLORS

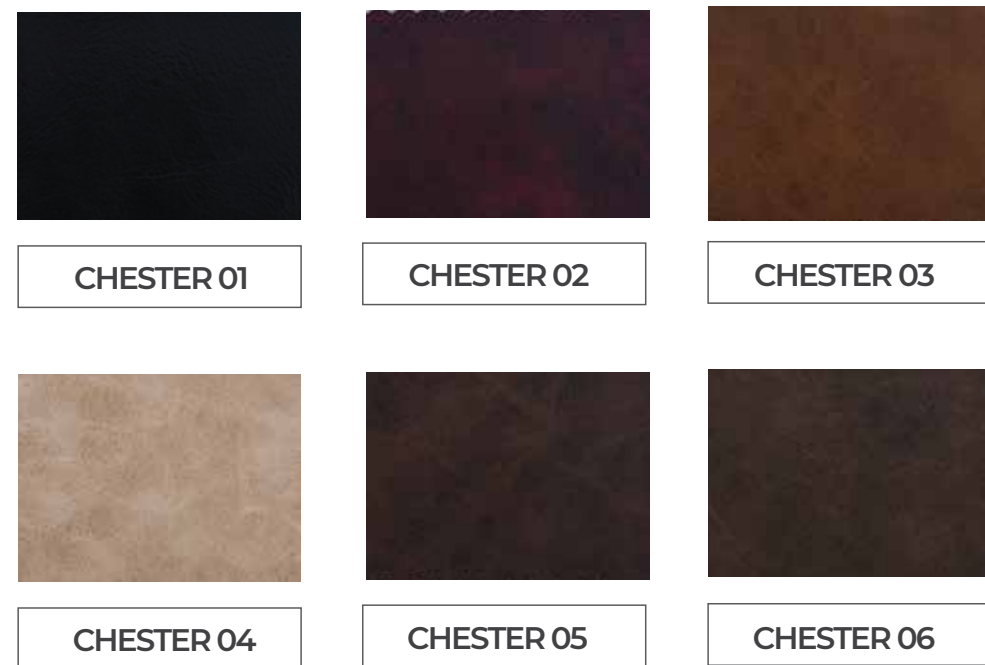
NEW KING



EXTRA



CHESTER



VISAGE



TOSKANO



SAHRA



doxa

**PARTNER  
IN DESIGN**  
Innovative  
Design Solutions

## FABRIC COLORS

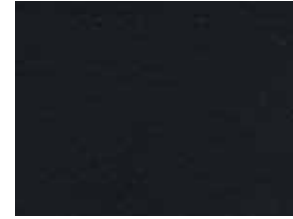
### ELITE



13723A



13591

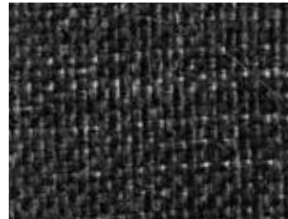


13727

### BASIC



B070



B040

## LEG COLORS



RAL 9005  
BLACK



RAL 7015  
ANTHRACITE

### CREPE



CR110



CR190



CR220



CR140



CR200



# doxa

## Factory

Merkez Mh. Sakaldöken Mevkii,  
Çaydeğirmeni / Devrek  
Zonguldak / TÜRKİYE

T: +90 372 594 58 02  
F: +90 372 594 46 62

## Export

Barbaros Mh. Halk Cd. No: 5  
Yenisahra / Ataşehir  
İstanbul / TÜRKİYE

T: +90 216 324 65 94-95  
F: +90 216 472 53 84

[www.doxa.com.tr](http://www.doxa.com.tr)

[info@doxa.com.tr](mailto:info@doxa.com.tr)

[f](https://www.facebook.com/doxa) [i](https://www.instagram.com/doxa) [t](https://www.twitter.com/doxa) doxa

**PARTNER  
IN DESIGN**  
Innovative  
Design Solutions



Product  
catalogue